

Nathan Hale News



of families, alumni, staff and friends. A publication of the Nathan Hale High School Foundation.

NO. 13 Spring 2005



New Performing Arts Center Part 1: Vision and Planning

Nathan Hale's new performance center will open for the Fall of 2005. The design and construction of the building and the wonderful teaching spaces inside grew out of a process that began well over two years ago. (Let's not count that the original building was planned to have an auditorium in 1963!). A site committee was formed by the School District and the chair was longtime parent, Peter House. Here is Peter's description of the planning process and the players involved.

"The new Performing Arts Center at NHHS is the product of true collaboration. The School District appointed a Site Design Committee that included teachers, administrators, parents and neighbors of the school as well as District officials, architects, engineers and consultants. We visited other theaters in the Seattle area, and met many times, over several years, in the run-up to the start of construction. We discussed environmental impacts, materials, colors, and functions, all with an eye on a tight preset budget. As appropriate, our committee made reports to the School Board. Throughout the project (continuing to the present) the architects (Mahlum Associates), the project managers (Heery International),

the builders (Sellen Construction) and the SSD staff were respectful of all of us "lay" people and they worked in concert to make this a success.

There were several meetings where the public was invited to review the project. One key feature is that street improvements such as new sidewalks, bus stop areas, plantings, and curbs are included. The neighborhood expressed concerns about the increased demand for parking during performing events, and our team responded by adding a pathway to additional parking at the Adams School to the north of NHHS. The end result, from the point of view of the neighborhood, is a significantly improved environment for our part of the Lake City community."

Overriding the design was a vision for what the interior should be as learning space. Nathan Hale belongs to the Coalition of Essential Schools and a central CES precept is that school design should support teaching goals. Nathan Hale is a "doing is learning" school. Tina Tudor, Nathan Hale teacher and member of the site design team relates how the new building reflects our school goals. Here is that vision in Tina's words:

...continued on Page 3

Annual Fund Drive Update

by Nancy Gruber, parent

In early March, the 2005/2006 Seattle School District funding allocation for Nathan Hale arrived. Funding cuts were expected. Unfortunately, the cuts were deeper than anyone expected... \$231,505 (6% of the budget). Ouch!

The principal and staff started right away to find ways to cope with the shortfall. Ms. Hechtman has already gotten part of the transition money back into the budget, earmarked the \$25,000 Boeing Grant, and, of course, is depending on the \$120,000 we hope to raise to fill some of the gaping budget holes. \$50,000 of annual fund dollars have already been used.

The GOOD NEWS is that nearly \$85,000 in donations and pledges have come in toward our goal!! Thank You! It's clear our community values what Nathan Hale offers our children every day. We want our students and teachers at Nathan Hale to continue to thrive! We are all aware that it won't happen next year without our financial support. To do this, we need the help of the entire Nathan Hale community. Please step up to the plate and help hit a financial home run for the school!

In fact, it may take a little more, dollar-wise, than each of us had planned on giving. No matter what you can pledge will be a great help. Also, you may have a grandparent, aunt or uncle who would be happy to make a donation to support the school our students love. Help us reach our goal.

Please, please consider your donation carefully and find an amount that works for you. Donations of all sizes will help and pledges are great if later in the year is a better time. An envelope is enclosed for your convenience. If you need more donation envelopes for family or friends, please don't hesitate to contact me at:

ngruber@speakeasy.net or 783-8784.

NH SCHOOL NEWS



Thank you! Thank you! to all of you who donated early to the Annual Campaign. \$50,000 of your early donations allowed us to balance our budget and receive approval for the 2005-2006 school year. With your support and much negotiation among a staff and parent committee, we are one of the few schools in the district that will not be displacing someone. That is a strong statement of commitment to the fine staff and education of your students in this time of ongoing budget strife. When the Annual Campaign reaches its goal of \$120,000 we will be in an even better position than is currently forecasted and able to purchase supplies and copies. Undoubtedly, your support will allow us to continue our mission of ensuring that ALL students will become honorable, thinking, skillful citizens. We could not do it without you.

NH FOUNDATION

Our Foundation Board consists of many Nathan Hale constituents: alumni and alumni parents, current and former principals, parents, current and former teachers, and students when they can attend. They work tirelessly for the school and I am deeply grateful for their hard work and dedication. There's not room to list them, but thank you all.

At our Spring meeting the Board set out an ambitious agenda. The Annual Campaign is 2/3rd of the way to its goal (thank you donors!) and at Fall Reception on Nov 19th, we will celebrate two of our treasured longtime teachers, Gary Case and Joan Northfield. The golf tournament and other events are planned for this

Note from the Principal

Other budget news that shows our learning community's commitment to student achievement: our math department has received generous support from an anonymous family foundation from the greater Seattle community. Math is a target program for our school as we adopt a new curriculum over the next two years to support our students' pursuit of a deeper understanding of math concepts and their application to their world. In a comment from the family's foundation:

"The foundation is committed to education. We support a strong mathematics program because the discipline and clarity of thinking learned in mathematics are key to academic success. The strength of Hale's mathematics department as shown by the level of collaboration, their strong results, and their desire to try a new inquiry-based approach impressed the foundation. At Hale 48% of seniors take Calculus, AP Calculus or AP Statistics, and the number of students taking 3 or 4 years of math is far above the district average. The family foundation supports Nathan Hale students with a donation of \$28,968 to cover the following:

- 310 math texts for year two of the Interactive Mathematics Program (IMP)
- Professional development for the entire department for IMP training
- 0.2 fte for a "focus class" (further support) for Math I students
- 50 TI-83 Plus calculators

We are excited about this donation and know that it goes towards our goal of having each student gain proficiency in mathematics and have a deep understanding of math concepts."

With this writing, we are in the final quarter of the 2004-05 school year. This means we have some powerful experiences to come for our students, especially our seniors. May 6 kicks off the celebratory season, as Senior Project notebooks are due. May 7 is Senior Prom at the Space Needle quickly followed by May 18, Senior Exhibition Night. We roll right into June with the Senior Breakfast on the first, Senior Awards Night the second, and the Patriot Assembly on June 3. Of course, we look forward to celebrating our students' achievements and hard work and the support of their families and friends at Commencement on June 16. We hope that you will join us in wishing our seniors well as they experience new learning beyond their lives at Nathan Hale.

- Lisa Hechtman

Note from the President

Fall and we all look forward to the opening of the Performing Arts Center. Please join us! And I hope you all will take advantage of Tribute Week to recognize a teacher, staff, or coach who has made a difference in your student's life. No donation is required but of course if you have not yet made a donation or would like to make an additional contribution that would be wonderful. We have added a link on our website, nathanhale.org, to make this especially easy.

When writing to an official regarding education, I sign with "Yours in public education". To me there is no more democratic institution, no more important entity in our community and nothing more

important for our future than public schools. I invite you to adopt Nathan Hale as worthy of your involvement and support. We have a treasure of a school.

Yours in public education -

Steve Reynolds

Nathan Hale News is published by the Nathan Hale High School Foundation, 10750 30th Ave NE, Seattle, WA 98125 www.nathanhale.org

*President: Steve Reynolds
Vice President: Becky Roe ('69)
Secretary: Rena Ferretti
Treasurer: Alice Lanczos*

Please send articles as e-mails to steve@apl.washington.edu.

Mark Your Calendar!

TRIBUTE WEEK - May 1st

Visit nathanhale.org to submit your Tribute Week form. Celebrate a special teacher, coach, mentor, staff member (see story below).

• • • •

Alumni, Parents, Staff, and Friends:

Join us **NOVEMBER 19th** for the **FALL RECEPTION** as we celebrate **Joan Northfield** and **Gary Case** and their years of service to the Nathan Hale Community!

• • • •

February through Fall ANNUAL CAMPAIGN FOR NATHAN HALE

Contact Carol Driver at
206-525-8906

• • • •

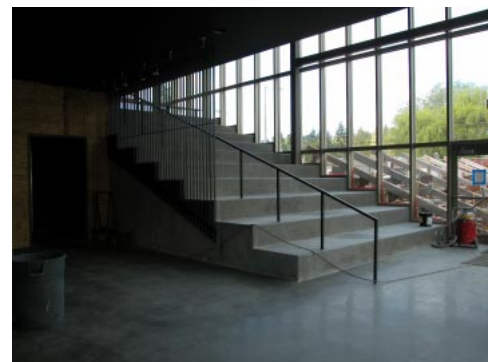
Performing Arts Center (cont.)

"During the school day, our performing arts center will be in constant use. The broad, stair-like structure visible through the north wall of glass is one of two "forum" style spaces where drama students will rehearse scenes and perform improv, tenth grade students will rehearse and perform Othello scenes and ninth grade students will demonstrate their understanding of the elements of Greek tragedy by creating their own Antigone scenes.

On the main stage, music students will be able to rehearse and perform in the same acoustical space. Eleventh grade American Studies students will have a large screen for presentation of their Video Quilt Projects. Our former Little Theater will be a flexible, black box space designed to accommodate displays of student work and smaller scale performances. All four performance spaces will be utilized for speakers. In the lobby, exhibition space will feature the work of our fine art and photography students as well as provide viewing and presentation space for the Integrated Studies mural projects.

These are all examples of activities that will benefit from the strong connection forged during the design process between the form of the spaces and their function. Both reflect the commitment at Nathan Hale to integrated course work, access to authentic and engaging curriculum for all of our students and an active rather than passive approach to education."

This will be an amazing space for Nathan Hale students and teachers. Meanwhile, the entire Nathan Hale community awaits the opening this Fall. Stay tuned. In the Summer newsletter we'll walk through the individual spaces that make up the new Nathan Hale Performing Arts Center.



Teaching Forum in the Performing Arts Center

Tribute Week May 1 - 7

The Foundation has designated the week of May 1-7 as Tribute Week to be celebrated in conjunction with National teacher Appreciation Week. You're invited to celebrate our terrific teachers and staff at Nathan Hale by recognizing their efforts, their kindness, their abilities, and their dedication.

Please send your name, address, phone number with a tribute of 30 words or less for any teacher or staff member you would like to recognize to the Nathan Hale office by May 5th marked "staff tributes". This year, we have an easy online form at the Foundation website for you to recognize that special staff member. Go to nathanhale.org and follow the link. The Foundation will share your message school-wide through the Daily Bulletin during Tribute Week. We're hoping we have so many

tributes, this will continue through May 13th. We will also print your message in the next Foundation newsletter.

Tribute week is a way for you to make a different kind of donation: a most heartfelt, genuine, and sincere appreciation of thanks for those who dedicate themselves day in and day out to make a difference in our students lives.

Questions: contact Brian Wong or Cindy Gok at 206-522-9267.

We Need you!

The Nathan Hale Foundation needs volunteers. Help with fund raising, alumni outreach, or one of the Fall events. We also need newsletter and mailing help AND we are always looking for new community building/fund-raising/event ideas. Please call Steve at 784-0625.

Alumni/Graduates

Watch for the summer newsletter. There will be a special announcement on how you can acknowledge your graduation with an annual plaque and/or entry courtyard engraving. Recognize your accomplishment while helping the school.

Class reunion stories wanted!

• • • •

WaMoola for NHHS

Join WAMoola and help Nathan Hale every time you use your Washington Mutual VISA. Designate NHHS by enrolling today at any branch or at: wamoolaforschools.com

- Jeanninne Blue Lupton (72)
NHHS Board Member

Nathan Hale High School Foundation
10750 30th Ave NE
Seattle, WA 98125

PRESORTED
STANDARD
US POSTAGE PAID
SEATTLE, WA
PERMIT NO. 2535

*School, Community and Alumni
Making a Difference for Students
at Nathan Hale High School!!*

Annual Campaign Ongoing

Your help is still needed. Thanks to those who've donated.

Tools for Teaching that your donation could buy:

- \$10 - two reams of paper
- \$25 - one college reference book for the counseling office
- \$50 - one music stand
- \$100 - chemicals for 150 students to do one chemistry experiment
- \$250 - fees for 50 math students
- \$500 - a lectern for the new performing arts center
- \$1,000 - 100 copies of a novel for the new 12th grade LA curriculum
- \$5,000 - computers to replace outdated equipment
- \$15,000 - home work center

Our goal is to raise \$120,000 for our students and our school.

Thank You

